



AIMSHOP.COM



• LAP TIMERS • LOGGERS • CAMERAS • DASHES • SENSORS • AND MORE

SHOP NOW

AiM Infotech

AiM pressure sensor 0-5 bar Race Studio 2 configuration

Release 1.00



VISIT SUPPORT CENTER

SOFTWARE DOWNLOADS

FIRMWARE UPDATES

PRODUCT DOCUMENTATION





1

Introduction

Once AiM pressure sensor 0-5 bar is physically connected to one of the device analog channels, it has to be loaded in the related configuration using AiM configuration software. In this datasheet it is loaded using **Race Studio 2** software.

You can proceed in two ways: importing the sensor configuration file, downloading it from the Products – Sensors (car/bike) section of our website www.aim-sportline.com, or creating a custom sensor.

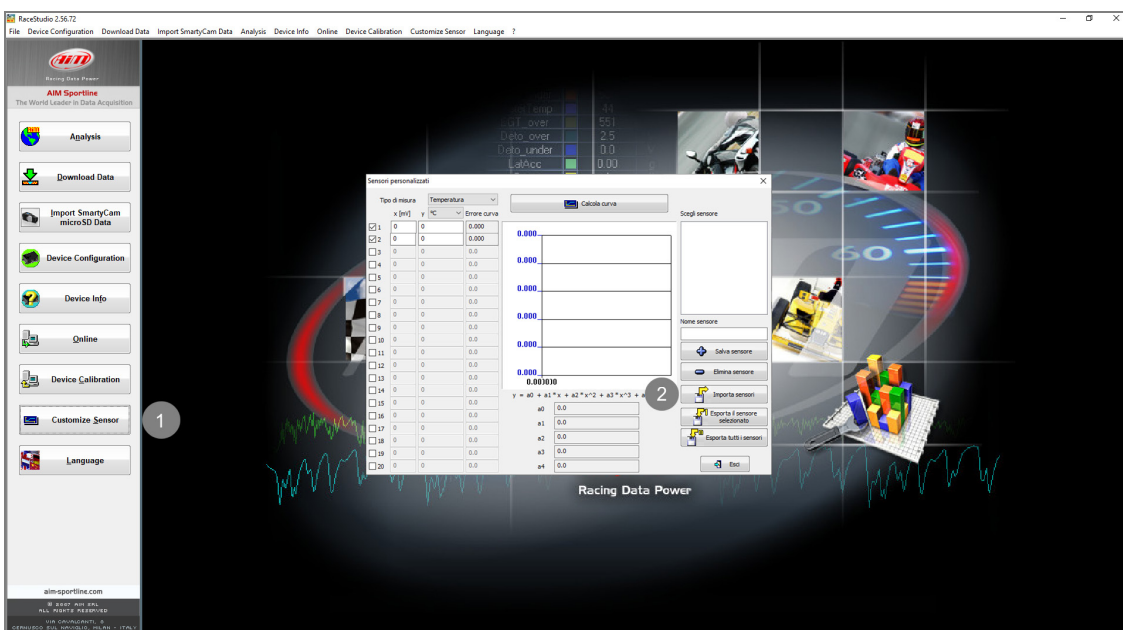
2 SCF* file import

To obtain the sensor configuration file, enter the Products – Sensors (cars/bikes) section of the AiM website www.aim-sportline.com, and click the link referred to the sensor you own (following image). Once the download is finished, save the file in a PC folder.

PRESSURE SENSORS							
Pressure sensor 0-5 bar	3/8 24	X05PSA0005B38		Datasheet	RS3 conf	RS2 conf	SCF*
Pressure sensor 0-10 bar	M10	X05PSA00010B10		Datasheet	RS3 conf	RS2 conf	SCF*
Pressure sensor 0-100 bar	3/8 24	X05PSA00010B38		Datasheet	RS3 conf	RS2 conf	SCF*
	M10	X05PSA00100B10					
Pressure sensor 0-160 bar	3/8 24	X05PSA00100B38		Datasheet	RS3 conf	RS2 conf	SCF*
	M10	X05PSA00160B10					
Pressure sensor 0-50 PSI	1/8 NPT	X05PSA00050P18		Datasheet	RS3 conf	RS2 conf	SCF*
Pressure sensor 0-150 PSI	1/8 NPT	X05PSA00150P18		Datasheet	RS3 conf	RS2 conf	SCF*
Pressure sensor 0-300 PSI	1/8 NPT	X05PSA00300P18		Datasheet	RS3 conf	RS2 conf	SCF*
Pressure sensor 0-2000 PSI	1/8 NPT	X05PSA02000P18		Datasheet	RS3 conf	RS2 conf	SCF*
VDO pressure sensor 0-5 Bar		X055NBO05		Datasheet	RS3 conf	RS2 conf	
VDO pressure sensor 0-10 Bar		X055NBO00		Datasheet	RS3 conf	RS2 conf	

*Download the sensor configuration file ready to import in RS2

To import the file in Race Studio 2, making it available in the pressure sensors list, from the Customize Sensors window (1), click Import Sensors (2) and select the saved file.

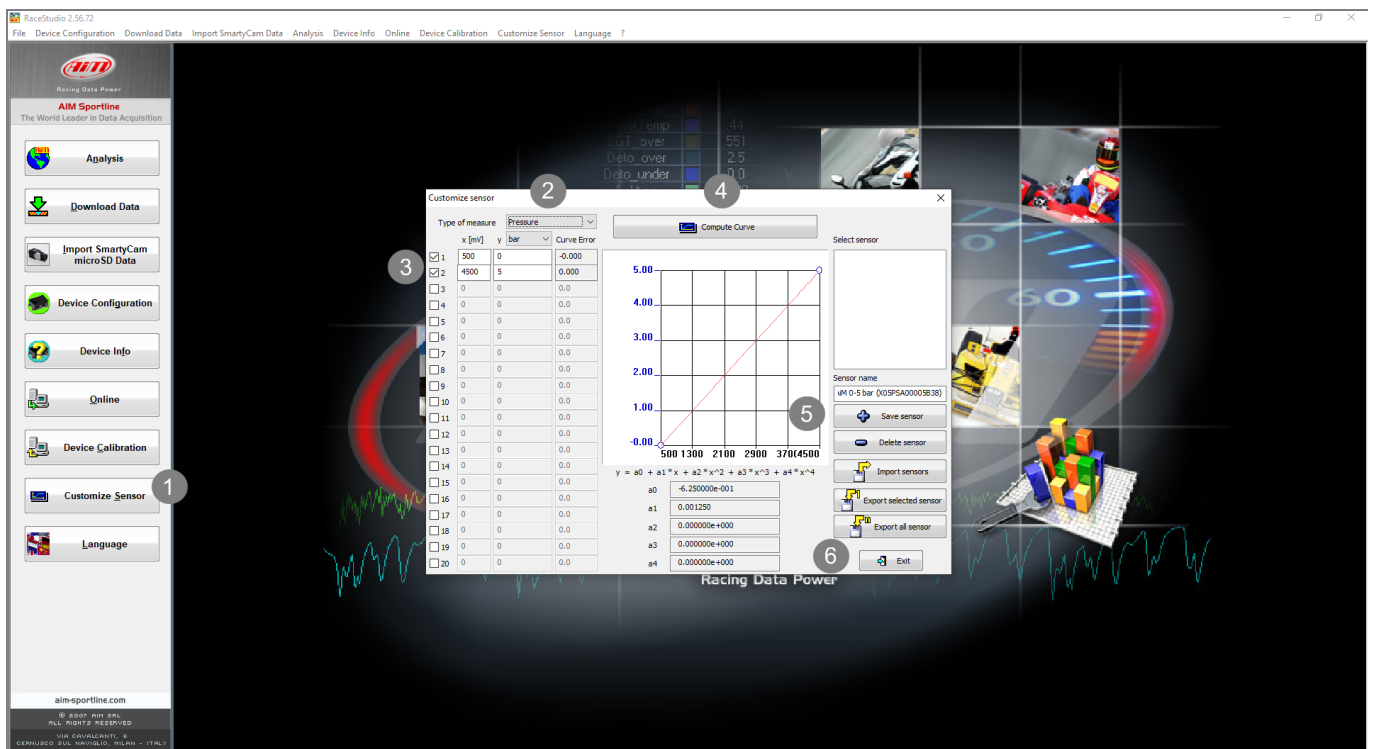


3 Custom sensor creation

- create a custom sensor pressing "Customize sensor" (1)
- select the type of measure (Pressure) and the measure unit (bar) (2)
- complete the first two rows of the table on the left as follows (3):

X [mV]	Y [bar]
500	0
4500	5

- press "Compute curve" (4), fill in sensor name - in the example "AiM 0-5 bar (X05PSA00005B38)" – and press "Save sensor" (5); press "Exit" (6)



4 Analog channel configuration

To set the sensor in the device configuration:

- enter "Channels" tab
- set the sensor on a channel selecting "AiM 0-5 bar (X05PSA00005B38)" or "AiM 0-5 bar (X05PSA00005B10)" in sensor type column of the desired channel and transmit the configuration to the device.

