



AIMSHOP.COM



• LAP TIMERS • LOGGERS • CAMERAS • DASHES • SENSORS • AND MORE

SHOP NOW

AiM Infotech

## AiM pressure sensor 0-160 bar Race Studio 3 configuration

Release 1.01

---



VISIT SUPPORT CENTER

SOFTWARE DOWNLOADS

FIRMWARE UPDATES

PRODUCT DOCUMENTATION

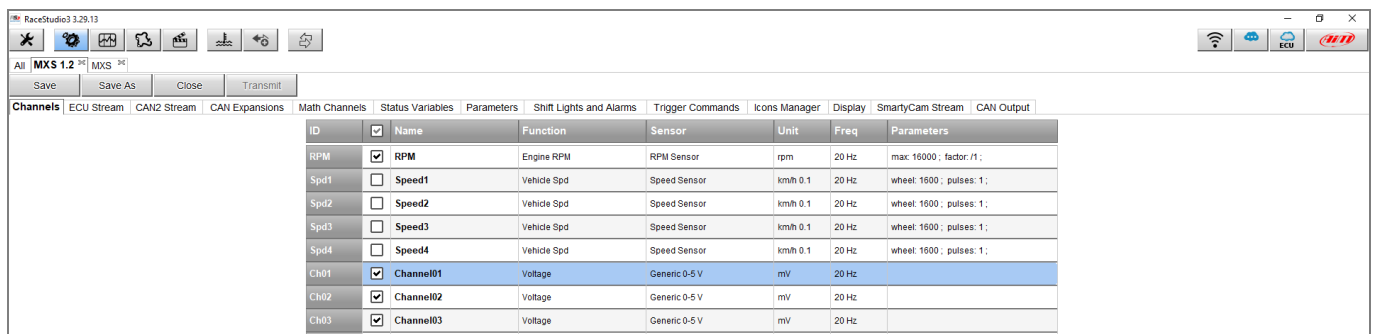


# 1 Introduction

Once pressure sensor 0-160 bar is physically connected to one of the device channels, it has to be loaded in the related configuration using AiM configuration software. In this datasheet it is loaded using **Race Studio 3** software.

# 2 Setup with Race Studio 3

- with the device switched on and connected to the PC run the software and select the device the sensor is connected to
- select the configuration the sensor is to be loaded on or create a new one pressing “New” and select “Channels” layer as here below
- select the channel where to set the sensor (in the example below channel01)



- a configuration panel shows up
- select: "Pressure" function as well as the kind of pressure to sample among:
  - Oil Pressure
  - Brake Pressure
  - Wheel Brake Pressure
  - Fuel Pressure
  - Pressure (generic pressure – as in the example)
- select the sensor "AiM 0-160 bar (X05PSA00160B10)"
- select the channel sampling frequency, unit of measurement and number of decimal places
- press "Save"
- press "Transmit"

