



AiM Infotech

Car / Bike Tire temperature sensor Race Studio 2 configuration

Release 1.00



1 Introduction

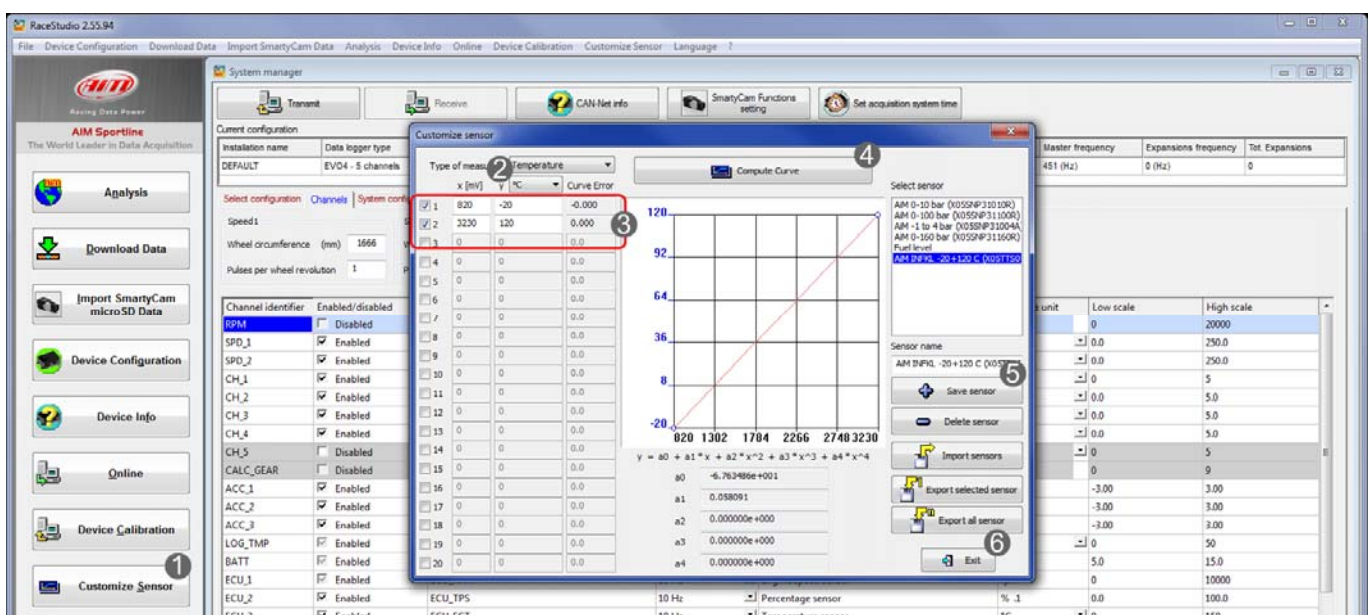
Once the tire temperature sensor is physically connected to one of the channels of AiM device it has to be loaded in the related configuration using AiM configuration software. In this datasheet it is loaded using **Race Studio 2** software.

2 Setup with Race Studio 2

- When the device is switched on and connected to the PC, run the software and select the device the sensor is connected to; create a custom sensor pressing "Customize Sensor" (1)
- select the type of measure (Temperature) and the measure unit (°C) (2)
- complete the first two rows of the table on the left as follows (3):

X [Mv]	Y [°C]
820	-20
3230	120

- press "Compute curve" (4), fill in sensor name – i.e. "AiM INFKL -20+120C (X05TTS01B0)" – and press save sensor (5); press "Exit" (6).



To set the sensor in the device configuration:

- enter "Channels" layer
- set the sensor on a channel selecting "AiM INFKL -20+120C (X05TTS01B0)" in "Sensor type" column of the desired channel (in the example channel 4)
- press "Transmit"

