

# AiM User manual

Kawasaki Ninja ZX-6R (636)  
MY2013 onwards

Release 1.00

---



# 1

## Supported models and years

---

This user manual explains how to connect Kawasaki ZX6R to AiM devices. Supported models and years are:

- Kawasaki Ninja ZX-6R (636) MY2013 2013 onwards\*

**\*Warning:** for this model/year AiM recommends not to remove the stock dash. Doing so will disable some of the bike's functions or safety controls.

# 2

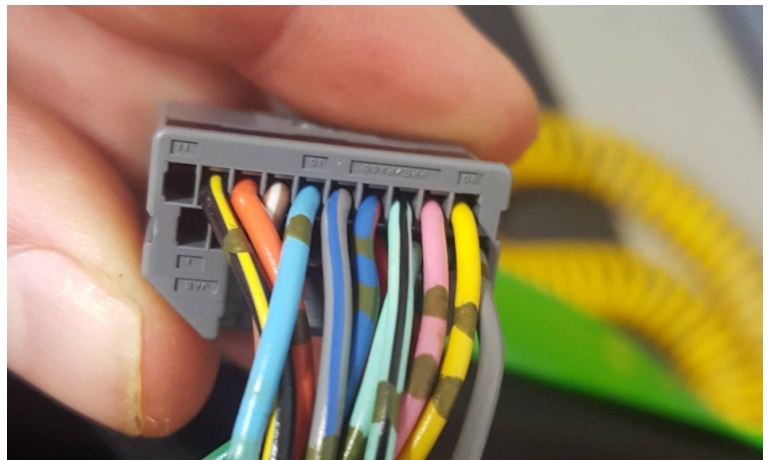
## CAN bus connection

---

Kawasaki ZX6R ECU features a bus communication protocol based on CAN that can be reached through the OEM dash connector, the ECU connector or other control units (i.e. ABS).

OEM dash connector on the bike loom is a 20 ways female connector with the following pins used for CAN and power connections (wires colours are specified too).

- **CAN H:** pin 16 (Gy/Bl)
- **CAN L:** pin 15 (LB)
- **Switched Power:** pin 14 (Br/W)
- **GND:** pin 12 (B/Y)



### 3

## AiM device configuration

---

Before connecting the bike ECU to AiM device set it up using Race Studio software. The parameters to set in the logger configuration are:

- ECU Manufacturer: Kawasaki
- ECU model: ZX6R 2013

### 4

## "Kawasaki" "ZX6R 2013" protocol

---

Channels received by AiM devices connected with "Kawasaki" "ZX6R 2013" protocol are:

ID	NOME CANALE	FUNZIONE
ECU_1	RPM	RPM
ECU_2	Gear	Engaged gear
ECU_3	Speed Front	Front wheel speed sensor
ECU_4	Speed Rear	Rear wheel speed sensor
ECU_5	ECT	Engine coolant temperature
ECU_6	IAT	Intake air temperature
ECU_7	TPS	Throttle position sensor
ECU_8	Engine Load	Engine load
ECU_9	Odometer	Odometer
ECU_10	Clutch	Clutch switch
ECU_11	KTRC Mode	Traction control mode
ECU_12	KTRC Level	Traction control level
ECU_13	Power Mode	Engine map selection

**Technical note:** not all data channels outlined in the ECU template are validated for each manufacturer model or variant; some of the outlined channels are model and year specific and therefore may not be applicable.