



AIMSHOP.COM



• LAP TIMERS • LOGGERS • CAMERAS • DASHES • SENSORS • AND MORE

SHOP NOW

SmartyCam HD



VISIT SUPPORT CENTER

SOFTWARE DOWNLOADS

FIRMWARE UPDATES

PRODUCT DOCUMENTATION



SmartyCam HD

- Display resolution 128x128 pixel -1.45"
 - Lens Multi-element glass lens with infrared filter
 - Diagonal field of view Standard lens 67°, Wide-angle lens 84°
 - Internal battery Rechargeable lithium battery 1040 mAh
 - Battery charge 700 mAh 12V
 - Internal battery duration Up to 60 min. acquisition
 - External power 9 -15 Volt
 - Memory Up to 64 Gb
 - Memory capability 1 hour recording = 2 Gb (average)
 - Movies format H.264 -720x1280 pixel @ 30fps
 - Accelerometer Three-axial ± 5G
 - Usage temperatures -20°C + 60°C
 - Auto Power On Yes, if connected to an AiM logger
 - Auto Power Off Yes
 - Auto Start/Stop Recording Yes
-
- Dimensions 87x63x48mm
 - Weight 250g
 - Waterproof IP65

SmartyCam HD GP

- Display resolution 240x320 pixel -2.4"
 - Lens Multi-element glass lens with infrared filter
 - Diagonal field of view Standard lens 67°, Wide-angle lens 84°
 - Internal battery Rechargeable lithium battery 1040 mAh
 - Battery charge 700 mAh 12V
 - Internal battery duration Up to 45 min. acquisition
 - External power 9-15 Volt
 - Memory Up to 64 Gb
 - Memory capability 1 hour recording = 2 Gb (average)
 - Movies format H.264 -720x1280 pixel @ 30fps
 - Accelerometer Three-axial ± 5G
 - Usage temperatures -20°C + 60°C
 - Auto Power On Yes, if connected to an AiM logger
 - Auto Power Off Yes
 - Auto Start/Stop Recording Yes
-
- Dimensions Module: 111x65x27mm
Bullet: ø24mm. Length 78mm
Module+bullet+harness+ battery: 350g
 - Weight Module: IP65
Bullet: IP67



SmartyCam HD

AiM SPORTS LLC
 31889 Corydon Street, Suite130
 Lake Elsinore, CA 92530
 U.S.A.

AiM SPORTS LLC SE
 1636 9th Street Southeast, Unit B
 Roanoke, VA 24013
 U.S.A.

Toll Free 800.718.9090
www.aimsports.com



AiM SRL
 Via Cavalcanti, 8
 20063 Cernusco S/N (Mi)
 Italy
 P. (+39) 02 - 9290571
 F. (+39) 02 - 92118024

www.aim-sportline.com



Visual - data defined. Introducing New SmartyCam HD.

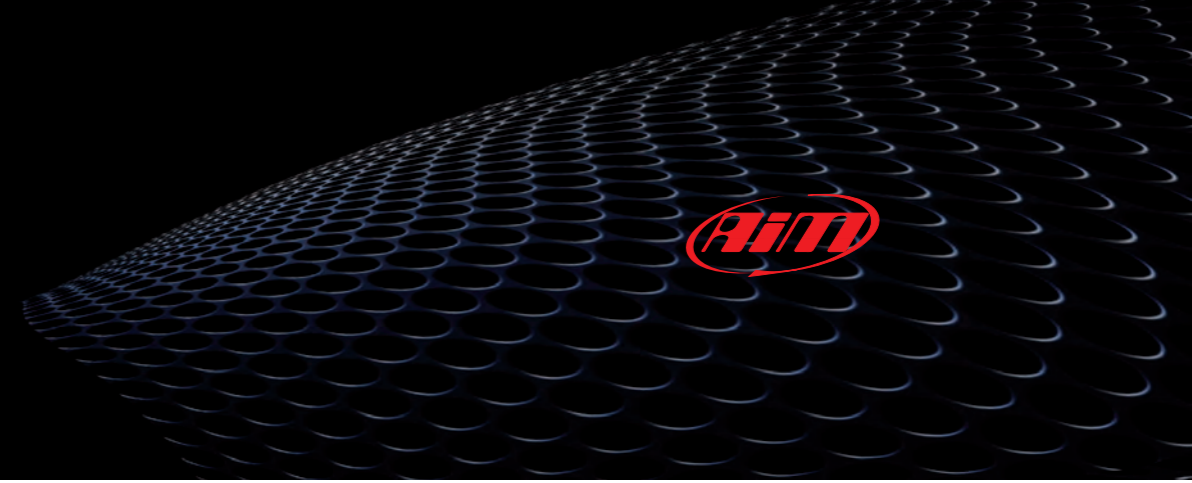
SmartyCam HD bridges the gap between high-resolution video and on-screen data in one revolutionary package designed specifically for motorsports.

From conception, our goal with SmartyCam HD was to create a truly visual data tool that would provide stunning video quality with integrated on-screen feedback to ultimately make you go faster on the racetrack. In order to do that, we went back to a clean-sheet and started from the beginning.

After all, racing deserves a better video and data solution.



SmartyCam HD. It's video with a higher IQ.



Global Shutter HD CMOS, proprietary High Quality lenses designed for motorsport application, automatic data overlay, robust aluminum box. A waterproof design, a thoughtful feature set make for best motorsport video recorder ever made.



Video with a racing heart and engineering mind.

SmartyCam HD embodies everything that we've learned from decades of being on and at the track. Each component, from imaging to the body itself, was selected for its ability to provide the highest quality video and data.

The result is a track-ready system that is all show without sacrificing the go.

Tack-sharp for the track.

By selecting the latest in global shutter CMOS technology, we were able to craft a system that could not only stand up to the rigors of the racing environment, but excel in these conditions.

And just to ensure that your on-track-action is at its clearest, we've added an all-new custom lens package.



Auto data overlay means you won't be overwhelmed.

SmartyCam HD allows you to quickly select from a variety of in-video overlays tailored for your type of racing.

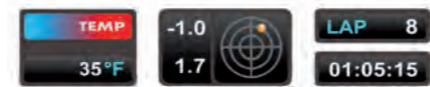
Prefer something even more you?



The new SmartyManager software offers the freedom to choose from a vast gallery of overlay elements to create a video experience that is all your own. And with the improved LogoManager plug-in, personalizing your video has never been better.

The difference is in the data.

Visualize RPM, speed, lap times, G's, throttle, brake, track position, and anything else you might want to see in-video to help you improve.



Were you actually 'flat' through turn five, or did it just feel that way? Now there's no guessing, no question, and no excuses. Faster lap times are just a video away.



SmartyCam HD. It's what's on the inside that counts.

New SmartyCam HD GP



Wave goodbye.

A quantum leap in video, SmartyCam HD is the first to offer a global shutter CMOS imager for motorsport applications. Traditional cameras use a rolling shutter to capture video, which causes wave and other artifacts - the result is poor video quality.

The advantage of a global shutter is that it exposes the entire image simultaneously, not one line at a time. This means no more wave, smear, skew, or wobble...all you get is brilliantly sharp race footage.

Plus, with H.264 compression, more becomes less without sacrificing video quality.



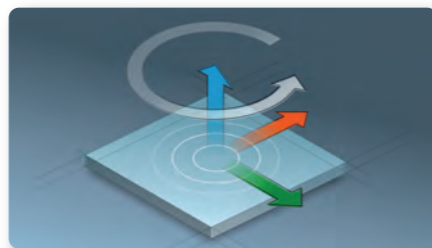
Example of old, "wave", image



An image with the new sensor

One less button to forget.

SmartyCam HD uses intelligent recording logic to start and stop, so you never miss any on-track footage. Select from a variety of smart-settings to fit your racing application. The built-in three axis accelerometer instantly and automatically brings the system to life, tells it when to start and stop, and even when to power down to conserve battery life. And just when you thought it couldn't get any smarter! Connect your SmartyCam HD to an AiM data system and let the integrated CAN bus do all of the heavy-lifting, from charging and recording, to data sharing between devices. We are making it so all you have to do is drive (really fast, of course).



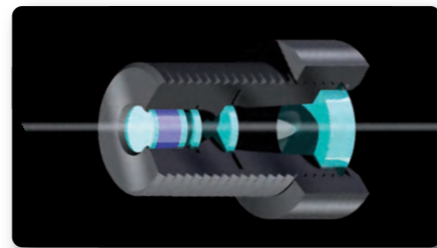
A well laid plan comes together.

Taking SmartyCam HD a step further, our team came up with pioneering video and data stream management firmware. Through better programming, we were able to make files smaller, which means sharing and editing your video has never been easier.

You'll have to see it to believe it.

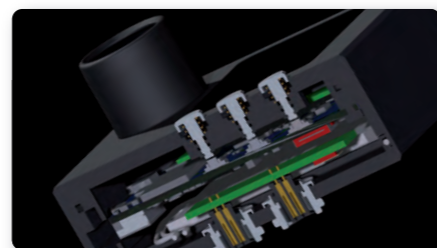
We came up with an exclusive seven-element optics package so that your race footage, day or night, looks brighter and sharper than ever before.

Just to be sure your video plays back exactly the way you saw it on track, we added a hybrid infrared filter to keep clarity-robbing light out for more accurate, uniform colors.



Form and function.

Sporting an all-new and all-aluminum chassis with waterproof construction, SmartyCam HD is track-clad and ready for battle. The front mounted TFT color display makes aiming and setup a breeze, while the brilliantly detailed buttons allow for navigation even by a gloved-hand.



All of the same cutting-edge technology you want from SmartyCam HD in bullet camera design.

New SmartyCam HD GP.

The professional on-board camera with data overlay with remote bullet-cam.

If you have a formula car, or a bike, or in every situation in which SmartyCam is not so comfortable to install, here it is

the version with remoted bullet-cam, SmartyCam HD GP. Same video quality, same connections to Master Loggers, same features but a completely different look. It is in black anodized aluminum, billet machined with a light, robust, and really small Bullet-Camera.



Bullet - Cam

Bullet - Cam

Waterproof door for SD Card and USB connection



Aluminum body

Wide Display

Push buttons

LVDS digital signal cable