



FAQ

Frequently asked questions

Creating KML files



Race Studio Analysis

Creating KML files

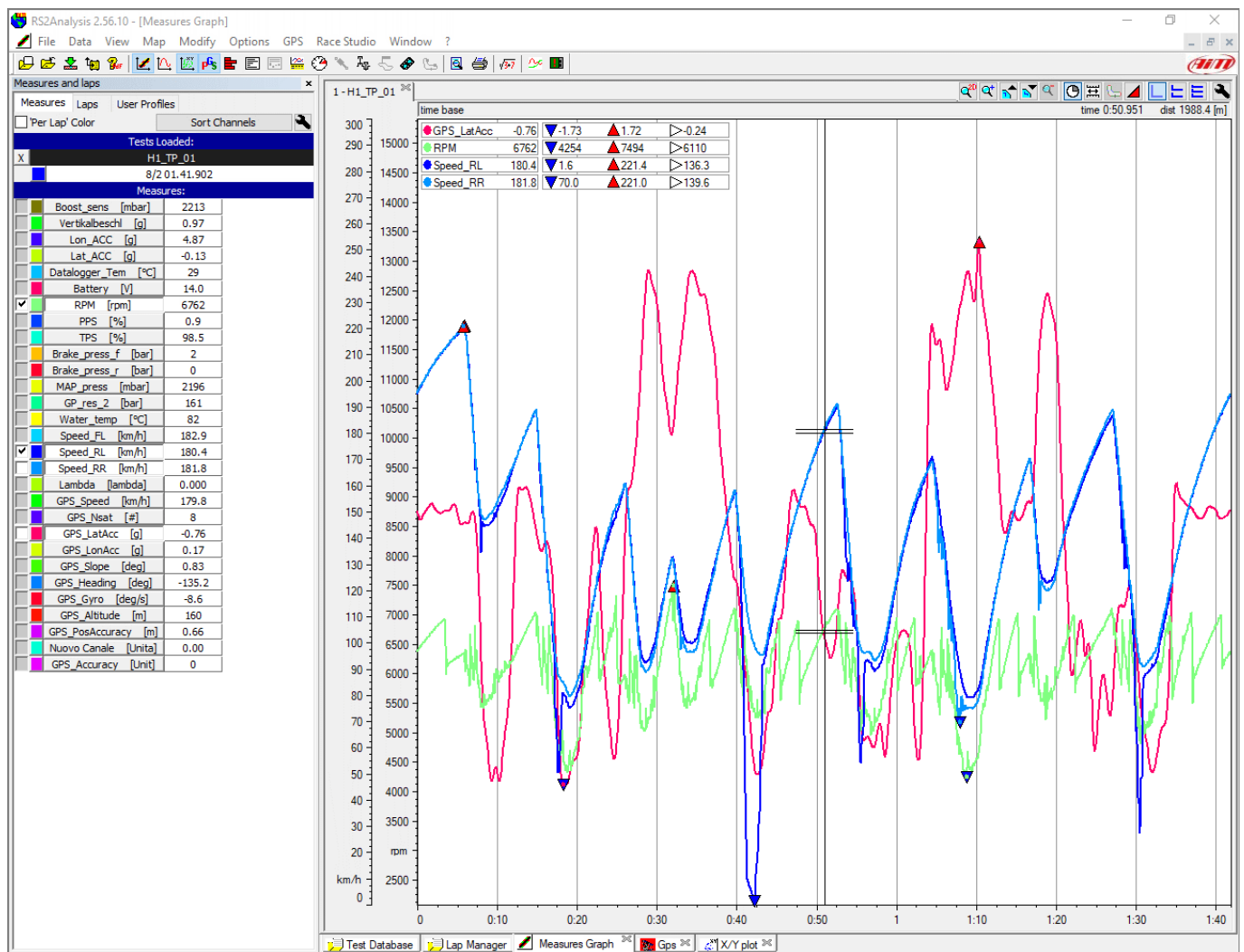
Question:

How can I visualize trajectories on Google Earth tracks images?

Answer:

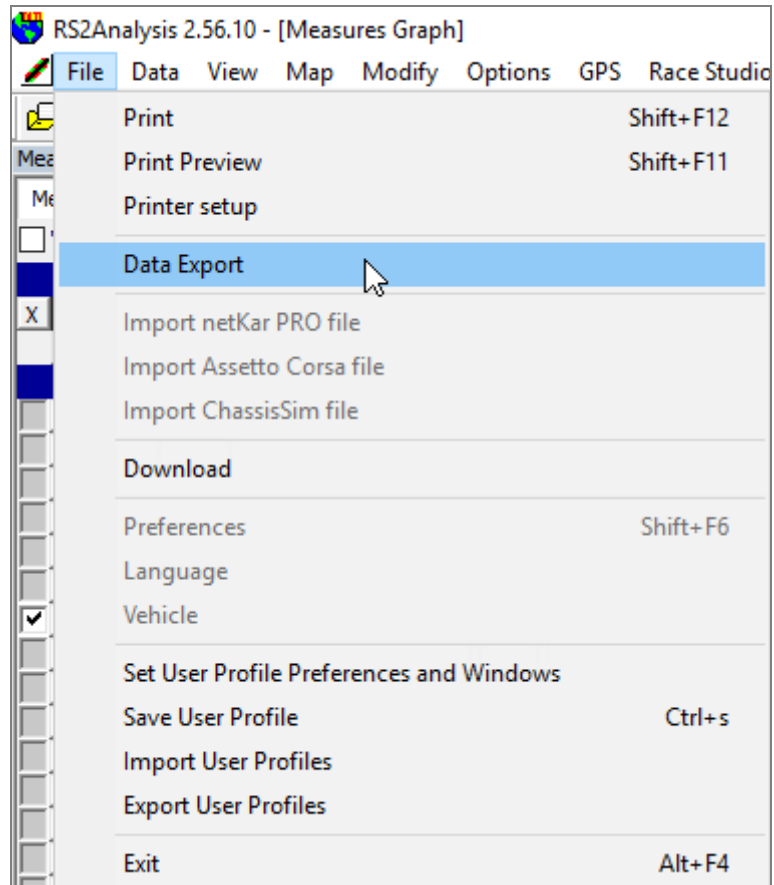
Trajectories can be visualized on Google Earth by generating a KML file. To create it:

- run RSA
- “Test database and Lap manager” window shows up
- open the test you run on the track want to export.



Race Studio Analysis

- Click "File" -> "Data Export"



Race Studio Analysis

- Close RSA
- open the folder where KML file has been created
- double click on the file and wait for Google Earth to open the file.

