



## FAQ

Frequently asked questions

---

Sending data





## Race Studio Analysis

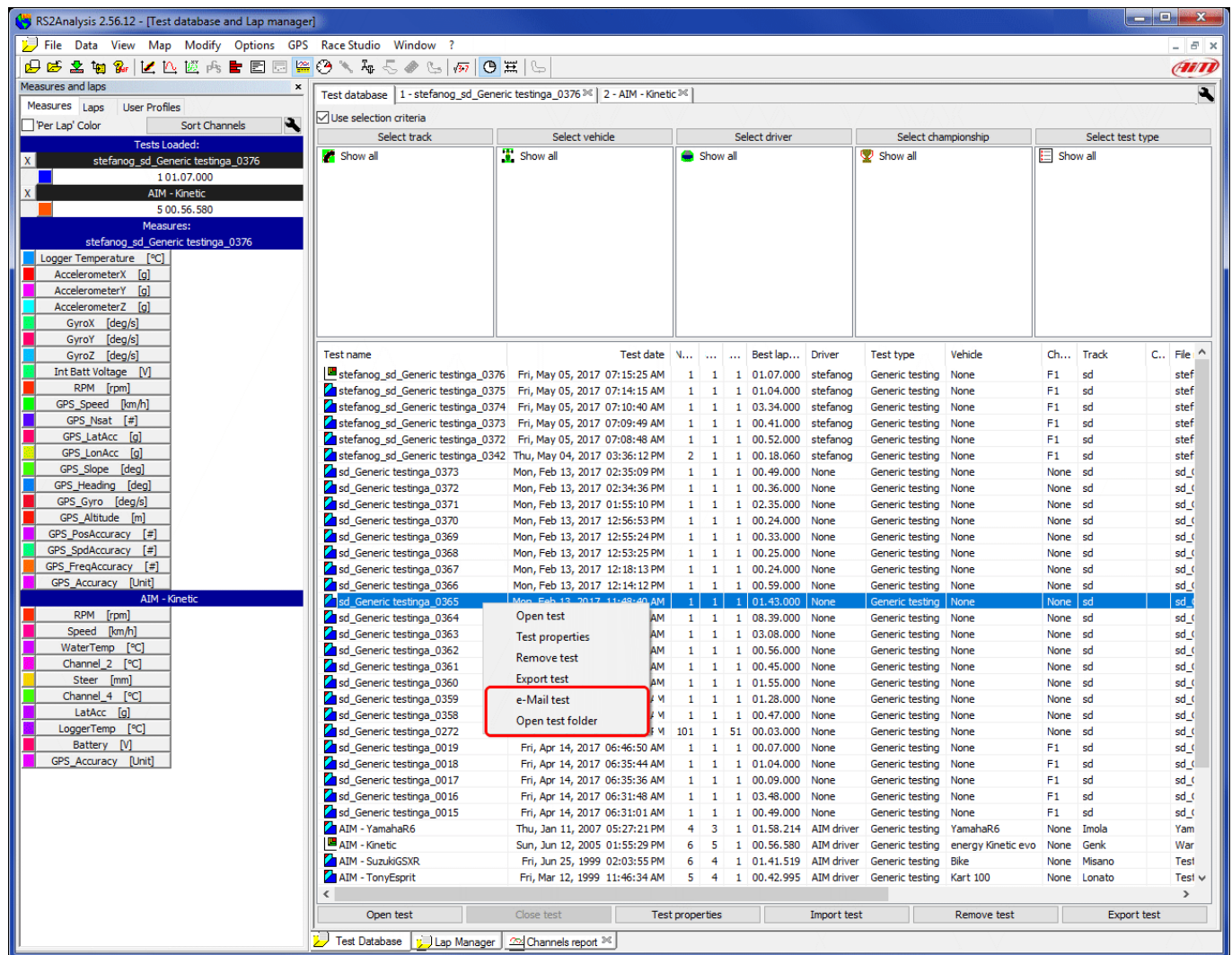
# Sending data

### Question:

How can I send data downloaded through Race Studio Analysis to AiM?

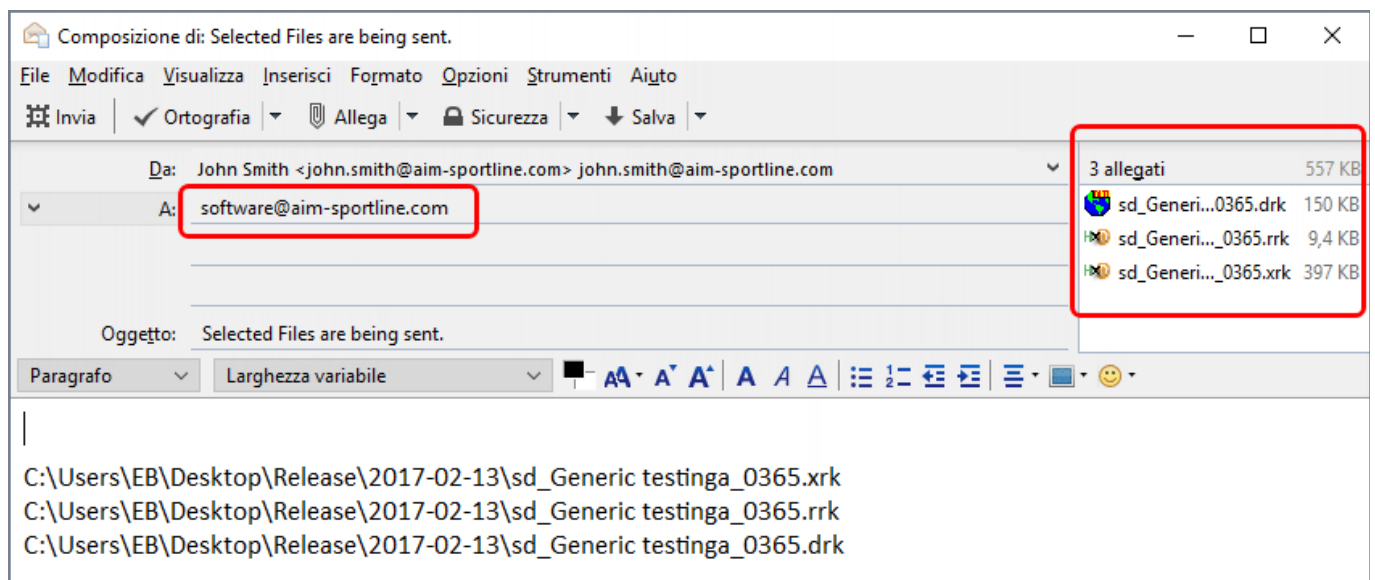
### Answer:

- Run Race Studio Analysis using the desktop icon or from Race Studio 3 (click "Analysis" on the software top keyboard): "Test Database" page opens. right click on the test you want to send. Useful options are the two bottom ones.



## Race Studio Analysis

- Clicking “**e-Mail Test**”, your client starts, prepares an e-mail to software@aim-sportline.com and automatically attaches the test file; this occurs for those users that have a client software.



- Clicking “**Open Test Folder**” the software opens the folder containing all files created for each test; among all the file named as the test you want to send select the one in “.xrk” format; this option is available for all users.

